

# General Motors Corporation

## Facility:

General Motors  
Tech Facility

## Location:

Warren, Michigan

## Work Performed:

100 feet of 8" sanitary pipe was lined  
along with two lateral connections

## Displacement of Occupants:

None - no down time

## Installer:

APL Great Lakes, a Nu Flow® Licensee

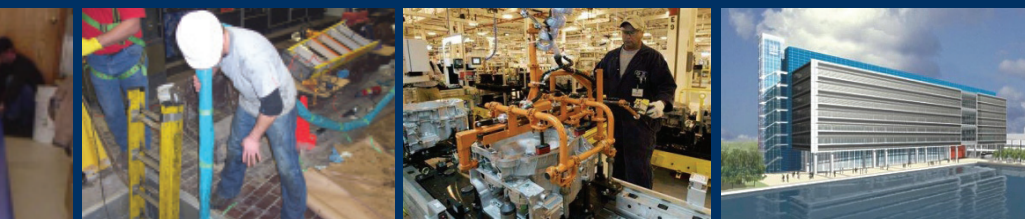


**NU FLOW**  
RELINE REPAIR RENEW

**1 800 834 9597**

[www.nuflowtech.com](http://www.nuflowtech.com)

[info@nuflowtech.com](mailto:info@nuflowtech.com)



\*U.S. Patents #6,691,741 and #7,216,674 - Additional Patents Pending

